

# FRANKLINVILLE CENTRAL SCHOOL



September/October 2020



## TEN BROECK ACADEMY AND FRANKLINVILLE CENTRAL CLASS OF 2020

Nicholas Tompkins Ainsworth  
Tawnie Autumn Bowers  
Abigail Dorothy Burrell  
Zachary Edwin James Burrell  
Adriana Helen Claus  
Tyler William Clear  
Aeden Blaine Farrington  
Kaylie Marie Farrington  
Jenessia Marie Feldman  
Jacob Michael Freer  
Anthony John Gadomski  
Hunter Michael Halgas  
Kevin James Harrington, Jr.  
Danielle Lennae Haskell

Lucas Tyler Hayden  
Sadie Rose-Marie Hood  
Hunter Anthony Irwin  
Hannah Audrey Ives  
Charles Douglas Jennings  
Kayleen Rose Kidd  
Matthew Raymond Klink  
Damien James Kraft  
Klynn Darwin Larson  
Cleon Hunter Lawton  
Tyler Austin Learn  
Abigail Rene Little  
Emily Anne Lockhart  
Vincenzo Christopher Marchese

McKenzie Drew Martin  
Abigail Grace McCoy  
Adrienne Elizabeth Metcalf  
Gabrielle Elizabeth Milligan  
Devin Henry Neamon  
Jayden Robert Nelson  
Felicia Ann Nicholas  
Nolan Howard Palmatier  
Jaida Angelei Perry  
Ilana Paige Phiansouri  
Emily Rose Poole  
Korbyn Aaron Potts  
Charity Rose Proverse  
Kameron Aben Ramadhan

Lucas Robert Rattigan  
Alyssa Marie Rose  
Kiara Nicole Smith  
Olivia Stephanie Smith  
Tayne Aria Swanick  
Jacob Lawrence Torpey  
Sydney Kay Towne  
McKenzie Elizabeth Welch  
Noelle Erin Werner  
Zachary Allen Wolfer  
Jewel Echo Wozniak  
Sydney Eileen Zuech

**First Day of School: September 8, 2020!**

# Congratulations!

## FCS Class of 2020 Graduates

*Congratulations and Best of Luck in the Future to Our 2020 Franklinville Central School Graduates!*



Nicholas  
**Ainsworth**



Tawnie  
**Bowers**



Abigail  
**Burrell**



Zachary  
**Burrell**



Adriana  
**Claus**



Tyler  
**Clear**



Aeden  
**Farrington**



Kaylie  
**Farrington**



Jenessia  
**Feldman**



Jacob  
**Freer**



Anthony  
**Gadomski**



Hunter  
**Halgas**



Kevin  
**Harrington, Jr.**



Danielle  
**Haskell**



Lucas  
**Hayden**



Sadie  
**Hood**



Hunter  
**Irwin**



Hannah  
**Ives**



Charles  
**Jennings**



Kayleen  
**Kidd**



Matthew  
**Klink**



Damien  
**Kraft**



Klynn  
**Larson**



Cleon  
**Lawton**



# FCS Class of 2020 Graduates



**Tyler  
Learn**



**Abigail  
Little**



**Emily  
Lockhart**



**Vincenzo  
Marchese**



**McKenzie  
Martin**



**Abigail  
McCoy**



**Adrienne  
Metcalf**



**Gabrielle  
Milligan**



**Devin  
Neamon**



**Jayden  
Nelson**



**Felicia  
Nicholas**



**Nolan  
Palmatier**



**Jaida  
Perry**



**Ilana  
Phiansouri**



**Emily  
Poole**



**Korbyn  
Potts**



**Charity  
Proverse**



**Kameron  
Ramadhan**



**Lucas  
Rattigan**



**Alyssa  
Rose**



**Kiara  
Smith**



**Olivia  
Smith**



**Tayne  
Swanick**



**Jacob  
LTorpey**



**Sydney  
Towne**



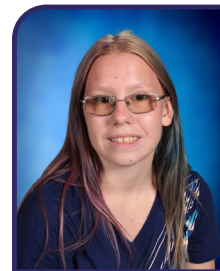
**McKenzie  
Welch**



**Noelle  
Werner**



**Zachary  
Wolfer**



**Jewel  
Wozniak**



**Sydney  
Zuech**



# FCS 2020 GRADUATION AWARDS

<b>Tawnie Bowers</b>	D'Youville Founders Scholarship Franklinville PTO Award Hicker Family Scholarship Jamestown Business College Scholar of Excellence Jen DeLong Memorial Scholarship Weigel Family Scholarship Award William Goss Memorial English Award
<b>Abigail Burrell</b>	Hicker Family Scholarship Jacqueline Tynda Memorial Award Jamestown Business College Scholar of Excellence Weigel Family Scholarship Award
<b>Zachery Burrell</b>	Alfred State College Alumni Scholarship Daniel McCarthy Scholarship Franklinville Teachers' Association Award Gertrude and Lewis Dille Memorial Scholarship Award Shannon Biela Memorial Award Walter F. & Julia A. Dziekonski Memorial Scholarship Award Weigel Family Scholarship Award
<b>Aeden Farrington</b>	Franklinville Aristocrats Scholarship Award Jamestown Business College Scholar of Excellence Jamestown Community College USA Scholarship
<b>Kaylie Farrington</b>	Franklinville Aristocrats Scholarship Award Jamestown Business College Scholar of Excellence Jamestown Community College USA Scholarship NYSED Scholarship for Academic Excellence Outstanding Math Student Award
<b>Jenessia Feldman</b>	Franklinville Aristocrats Scholarship Award Jamestown Business College Scholar of Excellence Keuka College Alumni Award of Excellence Keuka Grant William H. Schwier Memorial Award
<b>Jacob Freer</b>	Lippert Guardian Angel Fund Award
<b>Danielle Haskell</b>	Franklinville Teachers' Association Award Hicker Family Scholarship Jamestown Business College Scholar of Excellence Nancy Allen Memorial Scholarship Walter F. & Julia A. Dziekonski Memorial Scholarship Award Weigel Family Scholarship Award
<b>Sadie Hood</b>	David Burgasser Memorial Award Franklinville Aristocrats Scholarship Award Franklinville Teachers' Association Award Gordon Aimes Memorial Award Hicker Family Scholarship Jamestown Business College Scholar of Excellence Jamestown Community College USA Scholarship Weigel Family Scholarship Award
<b>Hunter Irwin</b>	Alfred University Deans Scholarship Franklinville Aristocrats Scholarship Award Franklinville Grange Award Franklinville Teachers' Association Award Franklinville Veterans of Foreign Wars Award Jamestown Business College Scholar of Excellence Niagara University Deans Scholarship St. Bonaventure University Provost Scholarship Virginia Watkins Memorial Award
<b>Hannah Ives</b>	Jamestown Business College Academic Progress Award
<b>Klynn Larson</b>	Franklinville Teachers' Association Award Niagara University Deans Scholarship Weigel Family Scholarship Award
<b>Cleon Lawton</b>	Averett University Academic Enhancement Scholarship Averett University Founders Scholarship Franklinville Teachers' Association Award Josephine S. Pepper Memorial Agriculture Scholarship Lycoming College Scholarship Lycoming College Grant Weigel Family Scholarship Award

<b>Tyler Learn</b>	CSEA Local 526 Award Jamestown Business College Access Award
<b>Abigail Little</b>	Alanson Crosby 214 - Woman's Relief Corps Award American Foundation of State CSEA Barbara Corey Memorial Scholarship Cattaraugus County Counselors' Association Award County & Municipal Employees Family Scholarship Franklinville Aristocrats Scholarship Award Patricia "Ann" Heister English/Journalism Memorial Scholarship Todd Briggs Memorial Scholarship Weigel Family Scholarship Award
<b>Emily Lockhart</b>	Weigel Family Scholarship Award
<b>Vincenzo Marchese</b>	Alfred State College Alumni Scholarship Cattaraugus County Bank Award United BOCES Teacher's Association Scholarship
<b>McKenzie Martin</b>	Virginia Watkins Memorial Award
<b>Abigail McCoy</b>	Franklinville Teachers' Association Award Gregory D. Spring Perseverance Award Hicker Family Scholarship Jamestown Business College Scholar of Excellence Jamestown Community College USA Scholarship Robert Kelsey Memorial Award Weigel Family Scholarship Award
<b>Nolan Palmatier</b>	Franklinville Teachers' Association Award Hicker Family Scholarship Jamestown Business College Scholar of Excellence Jamestown Community College USA Scholarship Maple Festival Scholarship Award NYSED Scholarship for Academic Excellence Weigel Family Scholarship Award
<b>Emily Poole</b>	Jamestown Business College Scholar of Excellence Jamestown Community College USA Scholarship
<b>Kameron Ramadhan</b>	Alfred University Deans Scholarship Cattaraugus County Trappers Memorial Scholarship St. Bonaventure University Provost Scholarship
<b>Lucas Rattigan</b>	New York FAFSA Completion Challenge Scholarship University of Advancing Technology Premier Thinker Scholarship
<b>Olivia Smith</b>	Jamestown Business College Scholar of Excellence
<b>Tayne Swanick</b>	Alanson Crosby 214 - Woman's Relief Corps Award Canisius Ignation Scholarship Hicker Family Scholarship Jamestown Community College USA Scholarship Pat McGee Nursing Scholarship St. Bonaventure University Friars Scholarship St. John Fisher College Trustees Scholarship Vincent Oliva Memorial Language Arts Award
<b>McKenzie Welch</b>	Lippert Guardian Angel Fund Award Franklinville Grange Award
<b>Zachary Wolfer</b>	Alfred University Presidential Scholarship Big 30 Athletic Fund Award Ernst Family Scholarship Franklinville Teachers' Association Award Hicker Family Scholarship Jamestown Business College Scholar of Excellence Josephine S. Pepper Memorial Agriculture Scholarship NYSED Scholarship for Academic Excellence Outstanding Math Student Award T.B.A. Social Studies Dept. Award Weigel Family Scholarship Award
<b>Sydney Zuech</b>	Franklinville Aristocrats Scholarship Award Franklinville PTO Award Franklinville Veterans of Foreign Wars Award Jamestown Business College Scholar of Excellence Maple Festival Scholarship Award





## FROM THE DESK OF THE SUPERINTENDENT...

By: Christopher Swiatek, Superintendent

Needless to say, the end of this past school year we have worked through trying times in our educational community. Since the middle of March our students, staff, and administration have been tested in many ways. Our patience levels exhausted, the way we deliver instruction to students tested, and how we look at school in general has been challenged. We learned a lot during this time. Our families face the challenges of everyday life, then the added responsibility of the day to day educational needs and instructional pathways for children have posed significant difficulties. For many, this became unbearable and exhaustive, for others the shift to online school transitioned well.

As we move into the new school year the District is looking to use the experiences we have acquired to move forward with a more consistent model of learning for our students. Built into this concept comes the creation of three plans. These plans will help address the primary concerns of safety for all, while still providing the best possible education we can, given the Covid 19 circumstances. No longer can the confines of our school building walls be the only source of instruction for our kids. With that premise clearly understood, Franklinville has worked with parents, teachers, and administration to design three plans to best fit the needs of all of our learners.

### PLAN A: IN PERSON INSTRUCTION MODEL

We are fortunate in Franklinville to have the necessary square footage of instructional space between our two buildings to be able to provide in person instruction, while still maintaining social distancing requirements. Our class sizes in an ordinary classroom will range from 10-14 students depending on grade or subject area. All of our students will return to the classroom Monday, Tuesday, Thursday and Friday to receive instruction directly from their perspective teachers. Wednesday will be reserved for building deep clean, teacher collaboration time and remote learning needs.

### PLAN B: HYBRID MODEL

In the Hybrid Model students will be broken up into a two cohort model so our buildings will only have 50% of our students at any given time. Cohort A will receive in school instruction on Mondays and Tuesday then shift to remote on Thursdays and Fridays while Cohort B will come in to school on Thursday and Friday. Wednesday's will remain the same format with the exception both cohorts will receive remote instruction on that day.

### PLAN C: REMOTE MODEL

The remote model will look very much like the finish of last year. Students will not be allowed in the buildings for instruction and all materials will be delivered via technology or hard copy packets. The only difference in this model from last year is teacher as of now will be allowed into their classroom for greater availability to families and kids versus last year they were not allowed into the facility. Unless we receive a closure directive from the state, this will be our last choice.

As you are well aware there are many variables that our staff will work with in any scenario. The District will strive to do our best to provide you and your family with the best possible educational experience while we all work our way through these difficult times.

## ON PAYING SCHOOL TAXES

All checks should be made payable to: Angela Schadt, Tax Collector. Please be sure to include a copy of your tax bill with your payment. You have two options to pay your school taxes:

- To pay in person – Community Bank (**Franklinville Branch ONLY**) will accept school tax payments in person only. Community Bank will **NOT** accept payments that are mailed or dropped in the night deposit box.

#### Community Bank hours are:

Mon.–Wed: 9:00 a.m. – 3:00 p.m.

Thurs.–Fri: 9:00 a.m. – 4:00 p.m.

- To pay by mail – Payments by mail should be sent to the following address:

#### Franklinville CSD

P.O. Box 1496

Buffalo, NY 14240-1496

## NEW YORK STATE 2021 CHANGES TO EXEMPTIONS FOR PROPERTY OWNERS AGE 65 AND OVER

To receive the Enhanced STAR exemption, property owners must enroll in the Income Verification Program (IVP).

Property owners enroll in the IVP with their assessor at the time they are applying for or renewing their Enhanced STAR exemption. They only need to enroll in the IVP once. If eligible for the Enhanced STAR exemption, they will automatically receive the exemption each year thereafter.

In the first year, the assessor will verify their eligibility based on the income information provided. In the following years, the New York State Tax Department will verify their income eligibility. Property owners will not need to renew the exemption or provide copies of their tax returns to their local assessor.

We will notify the assessor whether the property owner's income satisfies the income eligibility requirement, but we will not disclose their income to the assessor.

For more information, please visit:

<https://www.tax.ny.gov/pit/property/star/ivpfaq-propertyowners.htm>

# NEW TRANSPORTATION INFORMATION AND SAFETY PROCEDURES

If you have any questions regarding the bus schedule or the procedures, please contact Mr. Ted Wing, Transportation Director, at 676-8026.

Transportation has been a very challenging task. For the upcoming school year. Some students will have a change in their pick up and drop off times, due to the need to change the start and end times of school.

Bus pick up times will vary depending on your student's grade level. Additional information regarding bussing and schedules is listed in the District's plan for re-opening schools.

**Middle/High: 7:30am – 2:25pm • Elementary: 8:30am – 3:25pm**

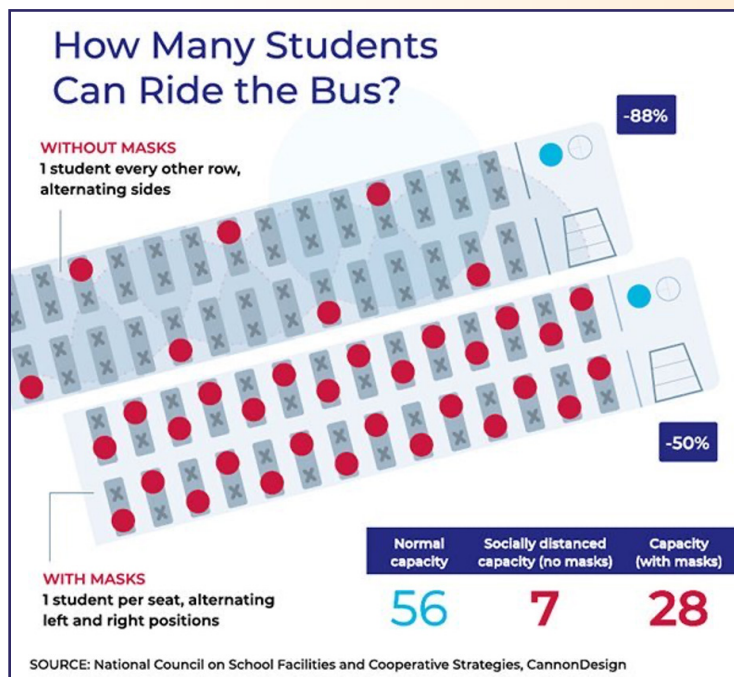
\*Parents picking up students, please **do not arrive before** 2:15pm for High School and 3:15pm for Elementary.

- **Student Safety is our number one priority! We respectfully ask that in the morning, your children are at the bus stop or end of driveway a few minutes prior to the scheduled bus arrival time.**

- **Students will be temperature screened as they get on the bus. If the child does not pass the screening, they would need to stay home or immediately picked up from the school.**

- **We are asking that, for both morning and afternoon bus runs, the bus driver needs to see a parent/guardian for students in Prekindergarten to 6th Grade.**

- **Students and Parents at bus stops should wear masks if more than 1 family is present at the stop.**



## ELECTRONICS USE ON THE BUS

Students are permitted to use their iPads and personal devices on the bus provided they follow the rules below. The rules are designed for safety and respect for others. Safety is of the utmost importance.



**Keep this privilege by following these simple rules!**

- ① Use earphones. (Sound should be off otherwise.)
- ② Use the lowest visible brightness.
- ③ Keep your device. (Do not pass it to others.)
- ④ Use your device only when sitting.
- ⑤ Phone calls only with bus driver permission.
- ⑥ No photographing, videotaping, or voice recording.

Failure to comply will result in a warning. Further incidents will result in losing the privilege to use electronic devices on the bus for a period of time. \*Any additional school rules still apply.

## VIDEO CAMERAS ON OUR SCHOOL BUSES

The Franklinville Board of Education recognizes its responsibility to maintain and improve discipline and to ensure the safety and welfare of its staff and students on school transportation vehicles. After having carefully considered and balanced the rights of privacy with the District's duty to ensure discipline, health, welfare and safety of staff and students on school transportation vehicles, the Board supports the use of video cameras on its school buses.

Video cameras may be used to monitor student behavior on school vehicles transporting students to and from school or extracurricular activities. Students in violation of bus conduct rules shall be subject to disciplinary action in accordance with established Board policy and regulations governing student conduct and discipline.

The District shall comply with all applicable state and federal laws related to student records when such recordings are considered for retention as part of the student's record. Video recordings shall be used primarily as evidence in the disciplining of students. However, the District may use such recordings for any other purpose it deems appropriate.

## REQUIREMENTS WHILE ON THE BUS:

1. **Everyone must have a mask while riding the bus.**
2. **Everyone will have their temperature screened before boarding the bus.**
3. **Students will have assigned seats on the bus and must wear their mask for the entire ride.**





# COVID-19 SCREENINGS

All Staff, Students, and Visitors to the school district must be screened prior to entering a school facility, which includes a school bus, we will be conducting temperature checks as students and staff get onto the school bus. Parents are encouraged to be at the bus stop in the morning with their children while they are getting screened.

The state requirement is that **“anyone who has a temperature of 100 F degrees or greater or has a positive response on the screening questionnaire must be isolated from others and sent home immediately.”**

People with COVID-19 have had a wide range of symptoms reported – ranging from mild symptoms to severe illness. Symptoms may appear 2-14 days after exposure to the virus. People with these symptoms may have COVID-19 and should not attend school or work.

- Fever or chills
- Fatigue
- New loss of taste or smell
- Nausea or vomiting
- Cough
- Muscle or body aches
- Sore throat
- Diarrhea
- Shortness of breath or difficulty breathing
- Headache
- Congestion or runny nose

Many symptoms of COVID-19 are also present in common illnesses. Checking for fevers would also check for Strep and the Flu which are also contagious.

Symptoms of COVID-19	Strep Throat	Common Cold	Flu	Asthma	Seasonal Allergies
Fever or chills	X		X		
Cough		X	X	X	X
Sore throat	X	X	X		X
Shortness of breath or difficulty breathing				X	
Fatigue		X	X	X	X
Nausea or Vomiting	X		X		
Diarrhea	X		X		
Congestion or Runny Nose		X	X		X
Muscle or body aches	X	X	X		

Staff and Visitors will also have to answer questions as part of their daily screening. **The Questions for COVID screening:**

1. Have you knowingly been in close proximate contact in the past 14 days with anyone who has tested positive for COVID 19?
2. Have you tested positive for COVID 19 in the last 14 days?
3. Have you experienced any symptoms of COVID 19 in the past 14 days?
4. In the last 14 days, have you traveled from another state or country for which New York requires a mandatory self-quarantine period?
5. If you answered yes to question #4, have you completed the 14 day self-quarantine as currently required by New York State?

## When to Seek Immediate Emergency Medical Attention

Look for emergency warning signs\* for COVID-19. If someone is showing any of these signs, seek emergency medical care immediately:

- Trouble breathing
- Inability to wake or stay awake
- Bluish lips or face
- New confusion
- Persistent pain or pressure in the chest

*\*This list is not all possible symptoms. Please call your medical provider for any other symptoms that are severe or concerning to you. Call 911 or call ahead to your local emergency facility: Notify the operator that you are seeking care for someone who has or may have COVID-19*

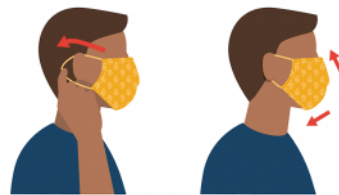
# HOW TO PROPERLY WEAR YOUR MASK

Masks are an additional step to help slow the spread of COVID-19 when combined with [every day preventive actions](#) and [social distancing](#) in public settings.

- **Who should NOT use masks:** children under age 2, or anyone who has trouble breathing, is unconscious, incapacitated or otherwise unable to remove the mask without assistance.
- **Masks are NOT surgical masks or N95 respirators.** Currently, surgical masks and N95 respirators are critical supplies that should be reserved for healthcare workers and other first responders.

## Wear your Mask Correctly

- Wash your hands before putting on your mask
- Put it over your nose and mouth and secure it under your chin
- Try to fit it snugly against the sides of your face
- Make sure you can breathe easily



## Wear a Mask to Protect Others

- Wear a mask that covers your nose and mouth to help protect others in case you're infected with COVID-19 but don't have symptoms
- Wear a mask in public settings when around people who don't live in your household, especially when it may be difficult for you to stay six feet apart
- Wear a mask correctly for maximum protection
- **Don't** put the mask around your neck or up on your forehead
- **Don't** touch the mask, and, if you do, wash your hands or use hand sanitizer to disinfect

## Follow Everyday Health Habits

- Stay at least 6 feet away from others
- Avoid contact with people who are sick
- Wash your hands often, with soap and water, for at least 20 seconds each time
- Use hand sanitizer if soap and water are not available



## Take Off Your Mask Carefully, When You're Home

- Untie the strings behind your head or stretch the ear loops
- Handle only by the ear loops or ties
- Fold outside corners together
- Place mask in the washing machine (learn more about [how to wash masks](#))
- Be careful not to touch your eyes, nose, and mouth when removing and wash hands immediately after removing.

<https://www.cdc.gov/coronavirus/2019-ncov/prevent-getting-sick/diy-cloth-face-coverings.html>

These materials developed by the Centers for Disease Control and Prevention (CDC) – updated July 6, 2020



# FOCUS ON TEN BROECK ACADEMY

By: Robert Hirsch, Middle/High School Principal



## GETTING READY FOR SCHOOL

The school will look a little different this year when we reopen, but we can't wait to welcome everyone back! We have developed plans for one hundred percent in person learning, a hybrid model and, remote learning. Our goal is, as it has always been, "every student every day." Whether we are face to face or remote, we will continue to work together, student, family, and school, to stay connected and support the growth and development of every child. Rita F. Pierson, once exclaimed, "Every child deserves a champion; an adult who will never give up on them, who understands the power of connection and insists that they become the best they can possibly be." As a community we are committed to continue to champion our children to the best of our ability.

We have set up our classrooms in the high school to socially distance our students according to the guidelines. We have purchased custom masks with our school logo in true TBA/FCS spirit fashion. We have modified schedules to limit movement and mass interactions around the building according to the New York State guidelines. We have been mindful in our planning for our students and staff. If questions or ideas to help us improve arise, please feel free to reach out to us and share.

This year we will develop our **G.R.I.T.** as we continue to overcome all obstacles together. We will need a **Great** mindset to learn and grow in real time. We will need **Resiliency** to have the ability to overcome all challenges and obstacles. We will need **Intentness** to be mindful in our steps knowing when to mask up, sanitize, and staying to the

right when we walk. Finally, we need to be **True** to our vision, values, and who we are.

**Great** mindsets

**Resiliency**

**Intentness**

**True** to our vision value, and who we are

Our goal of TBA is not to survive the pandemic, our goal is to continue to strive to be a rural school of excellence as we power through it. I look forward to the first day of school. I look forward to continually serving the great community of Franklinville.

## SCHOOL SAFETY

Student and staff safety has always been and will continue to be the school's most important mission. As we work to further develop and enhance a culture of trust and respect with, toward, and among those who walk the hallways, the District has taken several initiatives to promote a safe and respectful climate. In the past, the District invited State and County K-9 units into the building to search for contraband. Keeping illegal items away from our children keeps them safer. The District may once again call upon our friends in law enforcement at any time to help ensure your child's safety so they can focus on learning.

The District has a designated drop-off and pick-up zone for high school students on South Academy Street. It is clearly marked with striping. For your child's safety, please don't drop him/her off in the back parking lot of the high school as there is an inherent safety risk when people are walking through a parking lot while people are pulling into or leaving parking spaces.

## STUDENT PARKING

During school hours, students are to park across the street in the bus garage area only. The first three rows, those closest to the wooden privacy fence, are available to students. For student safety, students should only use the entrance and exit closest to the privacy fence (the one closest to Route 16) to enter and leave the parking lot as school vehicles, such as buses, enter and exit from the other two entryways.

Students who intend to drive must

have a parking pass issued to them from the guidance office. Vehicles that don't have a parking pass are subject to towing at the owner's expense.

Students must obey the traffic laws, as well as school rules, while on school property. For instance, the speed limit while in the parking lot is 5 miles per hour, while the speed limit on North and South Academy Streets is 20 miles per hour during school hours.

While on school property, students have no right to assume a right to privacy for the vehicle they drive. If school administrators deem it is reasonable and necessary to search a vehicle they may do so.

Please be aware that it is a privilege, not a right, to drive and use district facilities to park during school hours. The District reserves the right to revoke any student's driving pass and privilege to park on school property any time that it deems it necessary.

## WELCOME!

### WELCOME MR. HEALY



Michael Healy has a Master's degree in Clinical Mental Health Counseling and Bachelor's degree in Philosophy from St. Bonaventure University. He holds a Limited Permit as a Licensed Mental Health Counselor and a Provisional Certificate as a School Counselor in the State of New York. He has spent the last three years working for various colleges and universities in the local area.

He is excited to join the Franklinville community and provide educational and counseling services to the students of Franklinville Central School District.

Outside of his professional work, he enjoys life in the out-of-doors, exercise specifically kettlebells, and his dog. He loves to watch and engage in athletics, specifically hockey, soccer, and running. Though, the thing that brings him the most joy is time with family and friends.

No School: October 12th, Columbus Day  
No School: October 23rd, Superintendent's Day



## FALL SPORTS UPDATE

### START DATE CHANGES

By Coach Mark Blecha

With the Covid 19 pandemic still hovering over us, NYSPHSAA and Section VI are working to be prepared for what may or may not happen for fall sports. With everything a guessing game right now, plans change on a daily basis. The fall 2020 season was supposed to begin August 24th but has now been postponed until September 21. That date is now the earliest that the fall season could possibly begin for our student athletes. If NYS does not allow that start date, all sports would be pushed back to January 4, 2021. If this occurs, the winter season would start for roughly 10 weeks, followed by the fall season for 10 weeks, and end with a spring season of 10 weeks. The seasons would overlap at this point, but NYSPHSAA is looking at how best to serve the needs of our students and alterations can, and probably will, be made. At this point, registration on FamilyID will need to be delayed until August 21st for the fall season. This is because all forms must be filled out within 30 days of the start of the season for medical information purposes. **Please do not try to register on Family ID until August 21st.** Further information will be forthcoming as we are informed by the State. In the meantime, please stay safe by socially distancing, wearing a mask, and frequent handwashing and sanitizing. Athletes, there are many things that you can do at home to physically prepare for the upcoming season. Stay active and stay positive. Hope to see you all this fall.

### CROSS COUNTRY

By Coach Schunke

The boys and girls varsity cross-country team is very much looking forward to having a season this year. We have a great group of athletes who have been training hard throughout the summer. Although the season will look far different, I am hopeful that the challenges presented due to the Covid-19 threat can be overcome, and the athletes will be able to practice and participate safely this season. Practice is scheduled to begin September 21st, fingers crossed.

## 2020 FAFSA CHALLENGE WINNER

Ten Broeck Academy was chosen as the winner of the 2020 FAFSA Challenge by the Education Trust-New York for the “**MOST IMPROVEMENT**” in the number of seniors filling out the FAFSA forms. Here is a copy of the write up:

Franklinville Central School pulled out all of the stops to help its students complete the FAFSA. Toward the end of September, a representative from St. Bonaventure University participated in a financial aid night for seniors and their families. The presentation was sent home to families who could not attend in person. The counseling center sent other information home, too, including notices about area college fairs, college visits, and reminders about completing the FAFSA. Computers in the guidance center were available to students and parents to fill out the FAFSA with help from the high school counselor and the office secretary. During the pandemic, the high school counselor gave her personal cell phone number to every student and parent, and she also reached out to each of them multiple times to make sure they had everything they needed.

Part of winning this achievement included a scholarship (**the FAFSA Challenge Scholarship**) which was awarded to Lucas Rattigan.

Lucas has moved frequently, all the while living with his grandmother and attending Franklinville Central School. During his junior year, he went to BOCES in Ellicottville for part of the day to take media communication courses, which led to an interest in audio engineering. He took an online class to learn more about the field. He now wants to further his skills and learn more advanced methods in audio engineering, so he will be attending the University of Advancing Technology in Tempe, Arizona, this fall.

## 2020-21 YEARBOOK INFORMATION

The 2021 edition of Ten Broeck Trails will be going on sale in October. Students will be coming home with informational flyers with and order forms for purchases. As always, you can reserve your copy right at school by sending in your order form with the students to Mr. Wangelin's room. You also have the option of ordering on-line at [www.jostensyearbooks.com](http://www.jostensyearbooks.com).

Books will be \$45+ tax through the end of November, \$50+ tax through the end of January, and \$55+ tax after that until they are sold out. Books have sold out the past few years, so watch for the flyer and don't miss out!

Fall portrait information will also be coming out as soon as we have dates and procedures set in these difficult times. Inter-State Studios, who handle our portraits, will have information coming home with your students as soon as we have dates set up.



### AFFIRMATION PACKETS

Student will receive affirmation packets at open house, which will include a variety of information. Please review the packet with your child, sign and return. If you have any questions, please do not hesitate to contact me. **The iPad agreement is included in the packet as opposed to a separate document.** Please note that there is a charge for lost charging equipment. Please encourage your child to keep their charger at home and charge it nightly. They will be much less likely to lose it if they are not putting it in their backpacks.



# ELEMENTARY PRINCIPAL'S CORNER

By: Thomas Riddoch, Elementary Principal



## NEW START /DISMISSAL TIMES

Our school day will begin at 8:30am and end at 3:30pm.

## WELCOME BACK!

Welcome back! We are looking forward to seeing all of our students, faculty, and staff. With the new school year upon us, I want you to be aware of some of the changes.

We will be operating under new hours this year. Students may enter the building at 8:30 and will be released at 3:30 daily, except for Wednesdays which are remote learning days. With the changes for next year, we will not be operating a before or after-school program. Students will enter the building at 8:30, receive breakfast, and head directly to their classroom. All busing students will arrive through the main entrance by the elementary office, while walkers and drop off students will continue to use the south entrance.

I am also encouraging all students to bring their water bottle to school daily. The use of drinking fountains will be restricted to the bottle filling option only.

Thank you for everyone's patience and flexibility as we work through the reopening of our building. Please look to the district website for specific information regarding re-opening. If you have any questions or concerns please reach out to me in the main office.

## CAR RIDER PRO

We have a new addition to our car rider pick-up system for September. Cars will still enter through Riggs street and proceed to the South entrance of the building. The change is with the way we will track parent arrivals. Mrs. Mercier will no longer be out in the parking lot checking families in as they arrive! Under the new system, **Car Rider Pro**, each family will be given a tag that will register with the system when they pull in. This information will be relayed to the building and students will be dismissed in that order. More information regarding the specifics of the system and how to register will be sent to individual families before school starts in September.

## SCHOOL SUPPLIES

All school supplies have been purchased for our students for this upcoming year. The only items that you will need to provide are as follows:

**Pre-K:** Art shirt, sneakers for gym, small blanket, change of clothes, water bottle, backpack

**Kindergarten:** Art shirt, sneakers for gym, change of clothes, water bottle, backpack

**1st – 3rd Grade:** Art shirt, sneakers for gym, water bottle, backpack

**4th–5th Grade:** Art shirt, water bottle, backpack

## GRANDPARENT'S DAY

Grandparent's Day is a special day for our community and school. However, due to current restrictions, we will be postponing the event scheduled for the fall. **Stay tuned for future updates!**

## SHOW YOUR FCS PRIDE!

Wear your Franklinville School T-Shirts on the following days to show your Panther Pride! If you need a shirt please ask your teacher how to get one.

- |                |               |
|----------------|---------------|
| ► September 18 | ► February 26 |
| ► October 16   | ► March 19    |
| ► November 20  | ► April 23    |
| ► December 18  | ► May 21      |
| ► January 22   | ► June 18     |

## BUILDING UPDATE

Over the summer you probably noticed a lot of construction going on around the elementary building. In addition to the new road and parking lot, they are reworking the



entry on the south end and adding two new classrooms. Inside they are working on bathrooms, a new kitchen, and the locker rooms. Our staff has also been busy painting, cleaning, and sanitizing all of our spaces.

## IMPORTANT PRE-K INFO

**Opening Day: On September 8th**, parents with children coming to Pre-K are asked to join their child in the classroom to help transition the kids into their first school experience! Come join the teachers for some fun activities and also have some time to talk with your child's teacher. This day will be a shortened day for Pre-K students only and no transportation will be provided on this day.

## PRE-K FULL DAY CLASSES

Beginning on **Wednesday, September 9th**, classes will follow the district schedule and bus routes.

## CHARACTER EDUCATION

By Mrs. Clinch

Franklinville Elementary School recognizes the importance of developing strong character within our students. What is character and how is it formed? Character is who we are. It's what we do when no one is looking. It's the accumulation of thoughts, values, words, and actions. These become the habits that comprise our character.

This upcoming school year, we are going to continue to implement our Character Education program, focusing on traits such as determination, hard work, success, fitness, and self-control. Throughout the year, the students will focus on character skills. If a student is spotted demonstrating the skill, their name will go on a postcard and brought to the office. Each week, students are recognized for their strong character and then put into a drawing for prizes and special rewards. So, Panthers....let's get ready to show our great character!

## CONSENT TO RELEASE FREE OR REDUCED PRICE ELIGIBILITY INFORMATION

School officials may release information that shows that my child/children are eligible for free or reduced price meals to the following programs. I understand that the information will only be provided to the program(s) checked.

(Check the box next to the program area(s) you wish to release information to)

- ☐ Federal health programs such as Medicaid or Children's Health Insurance Program (CHIP).
- ☐ State or federal programs such as the Youth Summer Work program or the Educational Talent Search Program.
- ☐ Local health and education programs and other local programs that provide benefits such as free textbooks or school supplies, free band instruments, or reduced fees for summer school, tuition or driver education.
- ☐ Community programs such as holiday baskets, summer arts and playground programs.

I understand that I will be releasing information that will show that my child/children are eligible for free and reduced price meals. I give consent to release my confidential information for the above named uses.

Child/Children:

---

---

---

I certify that I am the child's parent/guardian for whom the application was made.

Signature of Parent/Guardian: \_\_\_\_\_

Print Name: \_\_\_\_\_

Address: \_\_\_\_\_

Phone Number: \_\_\_\_\_

Date: \_\_\_\_\_

### Nondiscrimination Statement:

In accordance with Federal civil rights law and U.S. Department of Agriculture (USDA) civil rights regulations and policies, the USDA, its Agencies, offices, and employees, and institutions participating in or administering USDA programs are prohibited from discriminating based on race, color, national origin, sex, disability, age, or reprisal or retaliation for prior civil rights activity in any program or activity conducted or funded by USDA.

Persons with disabilities who require alternative means of communication for program information (e.g. Braille, large print, audiotape, American Sign Language, etc.), should contact the Agency (State or local) where they applied for benefits. Individuals who are deaf, hard of hearing or have speech disabilities may contact USDA through the Federal Relay Service at (800) 877-8339. Additionally, program information may be made available in languages other than English.

To file a program complaint of discrimination, complete the USDA Program Discrimination Complaint Form, (AD-3027) found online at: [http://www.ascr.usda.gov/complaint\\_filing\\_cust.html](http://www.ascr.usda.gov/complaint_filing_cust.html), and at any USDA office, or write a letter addressed to USDA and provide in the letter all of the information requested in the form. To request a copy of the complaint form, call (866) 632-9992. Submit your completed form or letter to USDA by:

- (1) mail: U.S. Department of Agriculture  
Office of the Assistant Secretary for Civil Rights  
1400 Independence Avenue, SW  
Washington, D.C. 20250-9410;
- (2) fax: (202) 690-7442; or
- (3) email: [program.intake@usda.gov](mailto:program.intake@usda.gov).

This institution is an equal opportunity provider.



Community Eligibility Provision (CEP)/Provision 2 non-base year  
Household Income Eligibility Form

Franklinville Central School District is participating in the Community Eligibility Provision (CEP) or Provision 2 in a non-base year. All children in the school will receive meals/milk at no charge regardless of household income or completion of this form. This form is to determine eligibility for additional State and federal program benefits that your child(ren) may qualify for. Read the instructions on the back, complete **only one** form for your household, sign your name and return it to the school named above. Call (716) 676-8017, if you need help.

1. List all children in your household who attend school:

Student Name	School	Grade/Teacher	Foster Child	No Income
			<input type="checkbox"/>	<input type="checkbox"/>
			<input type="checkbox"/>	<input type="checkbox"/>
			<input type="checkbox"/>	<input type="checkbox"/>
			<input type="checkbox"/>	<input type="checkbox"/>
			<input type="checkbox"/>	<input type="checkbox"/>
			<input type="checkbox"/>	<input type="checkbox"/>

2. SNAP/TANF/FDPIR Benefits:

If anyone in your household receives either SNAP, TANF or FDPIR benefits, list their name and CASE # here. Skip to Part 5, and sign the application.

Name: \_\_\_\_\_ CASE # \_\_\_\_\_

3. Household Gross Income: List all people living in your household, how much and how often they are paid (weekly, every other week, twice per month, monthly). Do not leave income blank. If no income, check box. If you have listed a foster child above, you must report their personal income.

Name of household member	Earnings from work before deductions Amount / How Often	Child Support, Alimony Amount / How Often	Pensions, Retirement Payments Amount / How Often	Other Income, Social Security Amount / How Often	No Income
	\$ ____ / ____	\$ ____ / ____	\$ ____ / ____	\$ ____ / ____	<input type="checkbox"/>
	\$ ____ / ____	\$ ____ / ____	\$ ____ / ____	\$ ____ / ____	<input type="checkbox"/>
	\$ ____ / ____	\$ ____ / ____	\$ ____ / ____	\$ ____ / ____	<input type="checkbox"/>
	\$ ____ / ____	\$ ____ / ____	\$ ____ / ____	\$ ____ / ____	<input type="checkbox"/>
	\$ ____ / ____	\$ ____ / ____	\$ ____ / ____	\$ ____ / ____	<input type="checkbox"/>
	\$ ____ / ____	\$ ____ / ____	\$ ____ / ____	\$ ____ / ____	<input type="checkbox"/>
	\$ ____ / ____	\$ ____ / ____	\$ ____ / ____	\$ ____ / ____	<input type="checkbox"/>
	\$ ____ / ____	\$ ____ / ____	\$ ____ / ____	\$ ____ / ____	<input type="checkbox"/>

4. Signature: An adult household member must sign this application.

I certify (promise) that all the information on this application is true and that all income is reported. I understand that the information is being given so the school may receive federal funds. The school officials may verify the information and if I purposely give false information, I may be prosecuted under applicable State and federal laws, and my children may lose meal benefits.

Signature:

Date:

Email Address:

Home Phone

Work Phone

Home Address

DO NOT WRITE BELOW THIS LINE – FOR SCHOOL USE ONLY

Annual Income Conversion (Only convert when multiple income frequencies are reported on application)  
Weekly X 52; Every Two Weeks (bi-weekly) X 26; Twice Per Month X 24; Monthly X 12

SNAP/TANF/Foster

Income

Total Household Income/How Often:

Household Size:

Free Eligibility

Reduced Eligibility

Denied Eligibility

Signature of Reviewing Official

CEP/Provision 2 Non-Base Year Household Income Form INSTRUCTIONS

**PART 1**

**ALL HOUSEHOLDS MUST COMPLETE STUDENT INFORMATION. DO NOT FILL OUT MORE THAN ONE FORM FOR YOUR HOUSEHOLD.**

- (1) Print the names of the children, including foster children, for whom you are applying on one form.
- (2) List their grade and school.
- (3) Check the box to indicate a foster child living in your household, and check the box for each child with no income.

**PART 2**

**HOUSEHOLDS GETTING SNAP, TANF OR FDIPIR SHOULD COMPLETE PART 2 AND SIGN PART 4.**

- (1) List a current SNAP (Supplemental Nutrition Assistance Program), TANF (Temporary Assistance for Needy Families) or FDIPIR (Food Distribution Program on Indian Reservations) case number of anyone living in your household. Do not use the 16-digit number on your benefit card. The case number is provided on your benefit letter.
- (2) An adult household member must sign the form in PART 4. **SKIP PART 3** - Do not list names of household members or income if you list a SNAP, TANF or FDIPIR number.

**PARTS 3 & 4**

**ALL OTHER HOUSEHOLDS MUST COMPLETE ALL OF PARTS 3 AND 4.**

- (1) Write the names of everyone in your household, whether or not they get income. Include yourself, the children you are completing the form for, all other children, your spouse, grandparents, and other related and unrelated people living in your household. Use another piece of paper if you need more space.
- (2) Write the amount of current income each household member receives, before taxes or anything else is taken out, and indicate where it came from, such as earnings, welfare, pensions and other income. If the current income was more or less than usual, write that person's usual income. **Specify how often this income amount is received: weekly, every other week (bi-weekly), 2 x per month, monthly.** If no income, check the box. The value of any child care provided or arranged, or any amount received as payment for such child care or reimbursement for costs incurred for such care under the Child Care and Development Block Grant, TANF and At Risk Child Care Programs should **not** be considered as income for this program.

**PRIVACY ACT STATEMENT**

The District provides equal opportunity for students and does not discriminate against any student enrolled in (or any candidate for admission to) its programs and activities on the basis of actual or perceived race, color, national origin, sex, disability, or age. Further, the District does not discriminate on the basis of weight, ethnic group, religion, religious practice, sexual orientation, gender, or any other basis prohibited by state or federal non-discrimination laws, and provides equal access to its facilities to the Boy Scouts and other designated youth groups.



## FRANKLINVILLE CENTRAL SCHOOL HOME/SCHOOL COMPACT

### The School

In an effort to provide the highest quality instructional program, Franklinville Central School will agree to implement the following programs and activities.

#### *Franklinville Central School will:*

- Provide an equal opportunity for each student to participate in an academic program that is rigorous and challenging.
- Implement enrichment and advanced placement programs.
- Provide a safe atmosphere that is conducive to learning.
- Establish open lines of communication with families regarding the student's academic progress.
- Implement academic intervention services for children failing to meet set standards.
- Maintain a professional faculty possessing enthusiasm, knowledge of their subject matter, and commitment to the highest standards of excellence.

---

*Signature: Principal*

---

*Signature: Teacher*

### Home

Franklinville Central School recognizes that the school's purpose is to support the community and its families, and likewise, it is the family's responsibility to support the child and the school.

#### *Parents and guardians will:*

- Provide a stable home environment, proper nutrition, clothing, health care, and security.
- Supply generous amounts of their personal time to help students achieve academically.
- Provide a variety of experiences, which form a basis for learning.
- Support the goals of the school district.
- Communicate with the school regarding their child's progress.

---

*Signature: Parent*

## FRANKLINVILLE CENTRAL SCHOOL USE OF PHOTO AND SCHOOL RUN SOCIAL MEDIA ACCOUNTS

I, (Please Print) \_\_\_\_\_ ☐ **DO NOT**  
give permission for my child(ren)'s photograph to be used in publications and on the school website for the purpose of acknowledging my child(ren)'s accomplishments or promoting Franklinville Central School.

---

*Signature: Parent*

## FRANKLINVILLE CENTRAL SCHOOL USE OF HAND SANITIZERS

I, (Please Print) \_\_\_\_\_ ☐ **DO NOT**  
give permission for my child(ren) to use hand sanitizers, to be provided by the school for the purpose of preventing and controlling the spread of illness in school and on school trips.

---

*Signature: Parent*

**GENERAL RULES AND REGULATIONS GOVERNING STUDENT CONDUCT FOR ALL STUDENTS K-12 IN ALL PROGRAMS**

Students are given the opportunity to learn in a safe, positive environment. With that opportunity comes the expectation that students are responsible for their conduct during school hours, and at all school-related activities on or off school property.

Disciplinary action will be taken by the teacher and/or the administrator through a referral process when conduct is in violation of acceptable expectations. The Board of Education has specifically classified the following actions as not permissible and the student will be subject to disciplinary action, up to and including, suspension from school, when he/she engages in:

1. Engage in conduct that is disorderly. Examples of disorderly conduct include, but are not limited to:

- Running in hallways;
- Making unreasonable noise;
- Using language or gestures that are profane, lewd, vulgar or abusive;
- Obstruction of vehicular or pedestrian traffic;
- Engaging in any willful act which disrupts the normal operation of the school community;
- Trespassing - students are not permitted in any school building, other than the one they regularly attend, without permission from a teacher, coach, advisor or administrator;
- Computer/electronic communications misuse including any unauthorized or inappropriate use of computer, software, or internet/intranet account; accessing inappropriate websites; evading the District's content filter; using an outside wireless network; or any other violation of the District's Acceptable Use Policy;
- Driving a motorized vehicle in a reckless manner;
- Use of fireworks;
- Defacing school property.

2. Engage in conduct that is insubordinate. Examples of insubordinate conduct include, but are not limited to:

- Failing to comply with the reasonable directions of teachers, school administrators or other school employees in charge of students or otherwise demonstrating disrespect;
- Excessive tardiness, missing or leaving school without permission or valid excuse;
- Skipping detention.

3. Engage in conduct that is disruptive. Examples of disruptive conduct include, but are not limited to:

- Failing to comply with the reasonable directions of teachers, school administrators or other school personnel in charge of students.

4. Engage in conduct that is violent. Examples of violent conduct include, but are not limited to:

- Committing an act of violence (such as hitting, kicking, punching, and scratching) upon a teacher, administrator or other school employee or attempting to do so;
- Committing an act of violence (such as

hitting, kicking, punching, and scratching) upon another student or any other person lawfully on school property or attempting to do so;

- Possessing a firearm/weapon; authorized law enforcement officials are the only persons permitted to have a firearm/weapon in their possession while on school property or at a school function;

- Displaying what appears to be a firearm/weapon;

- Displaying signs of gang affiliation or engaging in gang-related behaviors;

- Threatening to use any firearm/weapon;

- Any verbal or written threat;

- Intentionally damaging or destroying the personal property of a student, teacher, administrator, other district employee or any person lawfully on school property, including graffiti or arson;

- Intentionally damaging or destroying school district property

5. Engage in any conduct that endangers the safety, morals, health or welfare of others. Examples of such conduct include but are not limited to:

- Lying to school personnel;

- Stealing the property of other students, school personnel or any other person lawfully on school property or attending a school function;

- Bullying, by definition, includes a variety of negative acts carried out repeatedly over time. It involves a real or perceived imbalance of power, with a more powerful child or group attacking those who are less powerful;

- Cyberbullying or Internet bullying, which includes using the Internet, cell phones or other devices to send or post text or images intended to hurt or embarrass another person. Cyberbullying includes the use of instant messaging, e-mail, web sites, chat rooms, and text messaging when such use interferes with the operation of the school; or infringes upon the general health, safety and welfare of District students or employees;

- Sexting, which is the slang term for the use of a cell phone or other similar electronic device to distribute pictures or video of sexually explicit images. It can also refer to text messages of a sexually-charged nature;

- Defamation, which includes making false or unprivileged statements or representation about an individual or identifiable group of individuals that harm the reputation of the person or the identifiable group by demeaning them;

- Discrimination, which includes the use of race, color, creed, national origin, religion, gender, sexual orientation or disability as a basis for treating another in a negative manner;
- Harassment, which includes a sufficiently severe action or a persistent, pervasive pattern of actions or statements directed at an identifiable individual or group which are intended to be, or which a reasonable person would perceive as ridiculing or demeaning;

- Intimidation, which includes engaging in

actions or statements that put an individual in fear of bodily harm;

- Hazing, which includes an intentional or reckless act directed against another for the purpose of initiation into, affiliating with or maintaining membership in any school-sponsored activity, organization, club or team;

- Selling, using or possessing obscene material;

- Using vulgar or abusive language, cursing or swearing;

- Smoking a cigarette, e-cigarette, cigar, pipe or using chewing tobacco, smokeless tobacco, or look-alike product; possessing tobacco products including, but not limited to: cigarettes, cigars, chewing tobacco, snuff, look-alikes and lighters;

- Possessing, consuming, under the influence of any amount, selling, distributing or exchanging alcohol or illegal substances including drug paraphernalia. Illegal substances include, but are not limited to, inhalants, marijuana, cocaine, LSD, PCP, amphetamines, heroin, steroids, look-alike drugs, and any substances commonly referred to as "designer drugs;"

- Inappropriately possessing, using, selling, sharing prescription and over-the-counter drugs;

- Gambling;

- Engaging in public displays of affection (PDA);

- Indecent exposure, that is, exposure to sight of the private parts of the body in a lewd or indecent manner;

- Initiating a report warning of fire or other catastrophe without valid cause, misuse of 911, or discharging a fire extinguisher;

- Having knowledge of, but failing to report, threatened violence or disruptive acts.

6. Engage in misconduct while on a school bus. It is crucial for students to behave appropriately while riding on district buses to ensure their safety and that of other passengers, and to avoid distracting the bus driver. Students are required to conduct themselves on the bus in a manner consistent with established standards for classroom behavior. Examples include, but are not limited to:

- Excessive noise, pushing, shoving and fighting;

- Unauthorized or inappropriate use of technology on school transportation.

7. Engage in any form of academic misconduct. Examples of academic misconduct include but are not limited to:

- Plagiarism;

- Cheating;

- Copying;

- Using an unauthorized electronic device;

- Altering records;

- Accessing other users' email accounts or network storage accounts and/or attempting to read, delete, modify, or interfere with the transferring and receiving of electronic communications;

- Assisting another student in any of the



above actions.

8. Engage in unauthorized use of personal entertainment/electronic devices. Examples of such unauthorized use include, but are not limited to:

- Unauthorized use of a cell phone/personal device; use within the classroom is only permitted with teacher or supervisor permission; please keep in mind that cell phone/personal device use at school is a privilege not a right;
- Use of a laser pointer;
- Photographing, videotaping or voice recording any student or staff member without their knowledge and permission;
- Transmitting a photograph, video tape or voice recording of a student or staff member without their knowledge and permission;
- Use of a camera or videotaping device in a locker room, bathroom or nurse's office.

*\*The full code of conduct is available (and any updates/changes will be posted) on the website at [fbafcs.org](http://fbafcs.org)*

## STUDENT DRESS CODE

In all schools (K-12): The purpose of the dress code at Franklinville Central School District is to ensure a productive learning environment in which all students feel comfortable. Students and parents have responsibility for acceptable dress and appearance. Student dress affects the culture and climate of the school. One of the values in our district is that we respect the rights and feelings of others; any item of clothing that would be offensive or distracting to others does not fit in our value system. This dress code applies to all students.

- No headwear such as hats, hoods, beanies or bandannas are to be worn (except for religious/medical purposes);
- No coats or outerwear are to be worn in the building (except for religious/medical purposes);
- Sunglasses may only be worn for medical reasons;
- Hazardous jewelry cannot be worn, including but not limited to spiked jewelry or wallet chains;

- Footwear should be worn at all times;
- No article of clothing, accessory or visible tattoo should have profanity, or obscene pictures, or imply a sexually suggestive remark, this also includes references to drugs, alcohol and tobacco;
- No undergarments should be visible;
- Torn or altered clothing should not be revealing or suggestive;
- Skirts, dresses or shorts should extend beyond the fingertips with arms at your side. Bottom of shirt should meet the top of pants;
- Pants, shorts, skirts or dresses should not be revealing or suggestive in nature (example: skin tight clothing);
- No student should wear halter or tube tops, spaghetti straps, one-shoulder, or strapless dresses or blouses. Straps on dresses and blouses must cover under garments;
- No see-through clothing;
- No pajamas or other obvious sleepwear;
- All tops must completely cover the midriff, back and not expose cleavage.

---

## STUDENT ATTENDANCE POLICY SUMMARY GRADES 6-12

### Policy: 7110

#### Determination of Excused and Unexcused Absences, Tardiness and Early Departures

Based upon our District's education and community needs, values and priorities, the School District has determined that absences, tardiness and early departures will be considered excused or unexcused according to the following standards.

a) Excused: An absence, tardiness or early departure may be excused if due to personal illness, illness or death in the family, impassable roads due to inclement weather, religious observance, quarantine, required court appearances, attendance at health clinics, approved college visits, approved cooperative work programs, military obligations or other such reasons as may be approved by the Board of Education.

b) Unexcused: An absence, tardiness or early departure is considered unexcused if the reason for the lack of attendance does not fall into the above categories (e.g., family vacation, hunting, babysitting, haircut, obtaining learner's permit, road test, oversleeping).

A written excuse signed by a parent/person in parental relation should be presented by the student when returning to school following each absence.

#### Student Attendance/Course Credit

The District believes that classroom participation is related to and affects a student's performance and grasp of the subject matter and, as such, is properly reflected in a student's final grade. For purposes of this policy, classroom participation means that a student is in class and prepared to work.

Consequently, for each marking period a certain percentage of a student's final grade will be based on classroom participation as well as the student's performance on homework, tests, papers, projects, etc. as determined by the building administrator and/or classroom teacher.

Students are expected to attend all scheduled classes. Consistent with the importance of classroom participation, unexcused student absences, tardiness, and early departures will affect a student's grade, including credit for classroom participation, for the marking period.

At the middle school/senior high school level, any student with more than 28 absences in a course may not receive credit for the course. However, it is District policy that students with properly excused absences, tardiness and early departures for which the student has performed any assigned make-up work, assignments and/or tests shall not be counted as an absence for the purpose of determining the student's eligibility for course credit. District procedures will specify how student tardiness and early departures will be calculated and factored into the District's minimum attendance standard.

However, where a student earns a passing grade, credit will not be denied for the course(s).

For summer school and courses meeting 1/2 year or 1/4 year, the same policy will apply and a calculation of the absences will be prorated accordingly. Transfer students and students re-enrolling after having dropped out will be expected to attend a prorated minimum number of the scheduled class meetings during their time of enrollment.

Students who are absent from class due to their participation in a school sponsored activity are to arrange with their teachers to make up any work missed in a timely manner as determined by the student's teacher. Attendance at school sponsored events where instruction is substantially equivalent to the instruction which was missed shall be counted as the equivalent of regular attendance in class.

Upon returning to school following a properly excused absence, tardiness or early departure, it shall be the responsibility of the student to consult with his/her teacher(s) regarding arrangements to make up missed work, assignments and/or tests in accordance with the time schedule specified by the teacher.

#### Disciplinary Consequences

Unexcused absences, tardiness and early departures will result in disciplinary sanctions as described in the District's Code of Conduct. Consequences may include, but are not limited to, in-school suspension, detention and denial of participation in interscholastic and extracurricular activities. Parents/persons in parental relation will be notified by designated District personnel at periodic intervals to discuss their child's absences, tardiness or early departures and the importance of class attendance and appropriate interventions. Individual buildings/grade levels will address procedures to implement the notification process to the parent/person in parental relation.

#### Appeal Process

A parent/person in parental relation may request a building level review of their child's attendance record.

*Adopted: 7/09/20*

## NOTIFICATION OF RIGHTS UNDER THE PROTECTION OF PUPIL RIGHTS AMENDMENT (PPRA)

PPRA affords parents and students who are 18 or emancipated minors ("eligible students") certain rights regarding our conduct of surveys, collection and use of information for marketing purposes, and certain physical exams. These include the right to:

■ **Consent before students are required to submit to a survey that concerns one or more of the following protected areas ("protected information survey") if the survey is funded in whole or in part by a program of the U.S. Department of Education.**

- 1. Political affiliations or beliefs of the student or student's parent;
- 2. Mental or psychological problems of the student or student's family;
- 3. Sex behavior or attitudes;
- 4. Illegal, anti-social, self-incriminating, or demeaning behavior;
- 5. Critical appraisals of others with whom respondents have close family relationships;
- 6. Legally recognized privileged relationships, such as with lawyers, doctors, or ministers;
- 7. Religious practices, affiliations, or beliefs of the student or parents; or

- 8. Income, other than as required by law to determine program eligibility.

■ **Receive notice and an opportunity to opt a student out of -**

- 1. Any other protected information survey, regardless of funding;
- 2. Any non-emergency, invasive physical exam or screening required as a condition of attendance, administered by the school or its agent, and not necessary to protect the immediate health and safety of a student, except for hearing, vision, or scoliosis screenings, or any physical exam or screening permitted or required under State law; and
- 3. Activities involving collection, disclosure, or use of personal information obtained from students for marketing or to sell or otherwise distribute the information to others.

■ **Inspect, upon request and before administration or use**

- 1. Protected information surveys of students;
- 2. Instruments used to collect personal information from students for any of the above marketing, sales, or other distribution purposes; and

- 3. Instructional material used as part of the educational curriculum.

Franklinville Central School District has developed and adopted policies, in consultation with parents, regarding these rights, as well as arrangements to protect student privacy in the administration of protected surveys and the collection, disclosure, or use of personal information for marketing, sales, or other distribution purposes. The Franklinville CSD will directly notify parents and eligible students of these policies at the start of each school year and after any substantive changes. Franklinville CSD will also directly notify parents and eligible students, such as through U.S. Mail or email, at least annually at the start of each school year of the specific or approximate dates of any activities of the type described above.

Parents/eligible students who believe their rights have been violated may file a complaint with:

*Family Policy Compliance Office  
U.S. Department of Education  
400 Maryland Avenue, SW  
Washington, D.C. 20202-4605*



### E.P.A. ASBESTOS MONITORING REGULATIONS

The U.S. Environmental Protection Agency's Asbestos Containing Material in Schools Regulations took effect in December 1987. Franklinville Central School had its buildings inspected for asbestos containing building materials. A management plan was developed for the District and is on file in the Superintendent's Office.

Results of the testing and a plan to manage asbestos containing building materials were submitted to the State Education Department. Through a variety of capital projects that have been completed in past school years, the District is virtually asbestos free. Periodic inspection of the condition of any known and identified asbestos material(s) is done by trained staff to monitor any changes or damage to the area.

### PESTICIDE NOTIFICATION LAW (EDUCATION LAW 409-H)

In July 2001, legislation was enacted requiring school districts to establish notification procedures for all staff and parents when pesticide applications are planned on school grounds. Here are some highlights of the legislation:

1. *Written notification is required to all staff and parents at the beginning of each school year, stating that pesticides may be used periodically during the year;*
2. *The District is required to establish a list of staff and parents who wish to be notified at least 49 hours before any pesticide application occurs on school grounds;*
3. *Staff and parents must be notified at the end of the year and at the end of winter and spring vacation of all products used, including date and location, for every application of pesticides since the previous notice;*
4. *The name of the person to contact for further information must be published.*

Some applications are exempt from the notification law. Emergency applications to protect people from imminent threat to their health or safety do not require 49-hour notification. Insecticide baits or gels or EPA-approved biopesticides do not require notice. Aerosol products with a directed spray, in containers of 18 fluid ounces or less that are used to kill spiders, bees, hornets or wasps are exempt also. Finally, any applications that take place where the facilities will be unoccupied for a continuous 72-hour period following the application do not require notice.

Franklinville Central School will not utilize pesticides during the school year. Should an unforeseen situation arise, notification will be forthcoming. If you would like further information on this subject, please contact Mr. Dustin Brisky at the high school, 676-8088.





### SECURITY REMINDER TO PARENTS AND VISITORS

In order to create a safe environment for everyone at the elementary school and high school, both buildings have a security system. All doors will be locked by 7:00 a.m. If you wish to enter either building after that time, you will be required to push the button on the outside wall near the doors and identify yourself to the person who answers your buzz. Entry to the school after 7:00 a.m. and before 3:00 p.m. will be limited to the main doors at the elementary school and high school. There is also a handicapped entrance at the back of the high school that has an access button. If we don't answer immediately because someone is busy, please be patient. We will be happy to greet you.



### PARENTAL PERMISSION REQUIRED FOR STUDENT RELEASE

Parents or guardians are reminded that students are not allowed to leave the school buildings or grounds without written permission to do so and only for legitimate reasons. In addition, under state law, school children may only leave school with persons approved by the child's parent or guardian. School district officials will be required to check the identity of persons requesting a child's release against a list provided by

the parents. The law also stipulates that a student will not be released to a person who is not on the list unless the child's parent authorizes the release. Please supply the appropriate school office with the names of persons authorized by you to dismiss your child from school.

### SEX OFFENDER REGISTRY AND NOTIFICATION "MEGAN'S LAW"

#### Information Website:

<http://criminaljustice.state.ny.us>

The purpose of this information is to provide an overview of the sex offender registration law and how the public can obtain information about sex offenders. Under the New York State Sex Offenders Registration Act (Megan's Law), which became effective in 1995, information related to the presence of a sex offender living in our community is made available to school districts. Registered sex offenders in New York are classified by the risk of reoffense. A court determines whether an offender is a level 1 (low risk), 2 (moderate risk) or 3 (high risk). The court also determines whether an offender should be given the designation of a sexual predator, sexually violent offender or predicate sex offender. Sex offenders registered on or after March 11, 2002 register for a minimum of 10 years unless they have been given a designation. If they have been given a designation, they register for life. Level 1 and 2 sex offenders registered prior to March 11, 2002 register for 10 years while level 3 offenders register for life.

When the Franklinville Central School District receives these notifications, the District is authorized to provide this information within the District and/or within the community. Consistent with its duty to protect students under its care, the District shall cooperate with local law enforcement agencies in the administration of the law. Any information provided by local law enforcement agencies under Megan's Law will be available in an appropriate location in all school buildings. Additional information will be provided to:

- district staff (building principals, staff members, bus drivers, custodians, coaches, after-school program personnel),
- community and youth organizations, and
- non-public schools in the district.

It is our intent to provide all reasonable protection for the children of our school district and our community. In each case, the District shall review the information received with its legal counsel to determine whether any of the information received should be deleted prior to its distribution. Our school health and safety curriculum contains instruction about child abuse and related programs for our students. We suggest that you follow common sense in ensuring that your child follows appropriate rules of safety. We recommend that you speak to your child about appropriate guidelines for safe practices, some of which should include:

- Be cautious of strangers.
- Keep a safe distance from cars.
- Do not get close to a car when a stranger is asking for information.
- Do not walk alone.
- Report any unusual events.

Additional information regarding this matter is available at the N.Y.S. Sexual Offender website at: <http://criminaljustice.state.ny.us/nsor/index.htm>. This website can also be accessed at the Franklinville Central School District website at: [www.tbafcs.org/](http://www.tbafcs.org/). You may also contact the Sex Offender Registry at 1-800-262-3257 Monday through Friday from 8 a.m. to 5 p.m.



## PARENTS' "RIGHT TO KNOW" ADVISORY

Under the federal *No Child Left Behind* legislation (latest reauthorization of the Elementary and Secondary Education Act), parents are required to be given several **official notifications**:

1. Parents may request information regarding the qualifications of their child's Title I teachers and paraprofessional staff. Parents may request specific information as to the following: ["Title I" Teachers are those supported by Federal Title I funds]

- whether the teacher has met State qualification and licensing criteria for the grade levels and subject areas in which the teacher provides instruction;
- whether the teacher is teaching under emergency or other provisional status through which State qualification or licensing criteria have been waived;
- the baccalaureate degree major of the teacher and any other graduate certification or degree held by the teacher, and the field of discipline of the certification or degree, and
- whether the child is provided services by paraprofessionals, and, if so, the qualifications of that paraprofessional (assistant).

2. Section 9528(a)(1) of the legislation requires that each school district receiving Title I funds under No Child Left Behind shall provide, on a request made by military recruiters or an institution of higher education, access to secondary school students' names, addresses and telephone listings.

- A student or a parent may request that such information not be released without prior written parental consent. In order to make such a request, please contact the high school guidance office at 676-8013 for further information. If you do not wish to have your student's information released to the military or to colleges without your expressed permission, you must send a signed, written statement to that effect to the high school guidance office at the beginning of the school year.

### FCS Is An Equal Opportunity Employer

The Franklinville Central School District hereby advises students, parents, employees and the general public that it offers employment and educational opportunities, including vocational educational opportunities, without regard to sex, race, color, national origin, handicap, or religious affiliation.

Inquiries regarding this non-discrimination policy may be directed to the Title IX Coordinator (Sex Discrimination) and the Section 504 Coordinator (Handicap Discrimination) who is:

*Christopher Swiatek  
Franklinville Central Schools  
31 North Main Street  
Franklinville, NY 14737  
Telephone (716) 676-8059*

### PARENTAL NOTIFICATION OF A STUDENT'S PLACEMENT IN A LANGUAGE INSTRUCTION EDUCATIONAL PROGRAM

Children who have been identified as a "Limited English Proficient/English Language Learner" (LEP) student have the right to be placed in academic programs that will help them increase their level of academic performance in English. If your child has been identified as an "LEP" student, you will be notified as to the program and/or service that your child is receiving.

The District will hold meetings at least twice a year for parents/guardians of English learners and we encourage you to attend. At those meetings, we will provide you with information that will help you to better understand the goals of your child's program, and assist you in ways to help your child.

However, you should know that you have the right to:

1. request that your child be immediately removed from the instructional bilingual program;

2. decline your child's participation in the instructional bilingual program or choose another available program or method of instruction, and;

3. request assistance in selecting from among the various programs and methods of instruction available.

Specifically, you have the right to withdraw your child from participation in an instructional bilingual education program provided that you first meet with us to discuss the nature, purpose and educational value of the program. At a minimum, however, your child must participate in a free-standing, English as a Second Language program.



**Franklinville Central School District**

Fostering a Culture of Success

Home of the Panthers

District Home

Translate

Quick Links



Sign In | Register

Visit Us On the Web for Information!

**www.tbafcs.org**

## HOMELESS STUDENT NOTIFICATION

It will be the policy of Franklinville Central School District, (LEA) to determine whether there are homeless students within the District by contacting our local department of social services, the local runaway and homeless youth shelter, and any other shelters located in the LEA. It is understood that not all homeless students can be identified through agencies as they may be sharing the housing of other persons, such as family or friends, due to loss of housing, economic hardship, or other similar reason. For this reason, the LEA will have an enrollment form that asks for a description of the current living arrangements of the child or youth in order to determine whether the child or youth meets the definition of a homeless child under the McKinney-Vento Homeless Education Assistance Act (42 USC §11434a[2]) ("McKinney-Vento") and New York Education Law §3209(1)(a).

A homeless child is defined as a child who does not have a fixed, regular, and adequate nighttime residence or whose primary nighttime location is in a public or private shelter designated to provide temporary living accommodations, or a place not designed for, or ordinarily used as regular sleeping accommodations for human beings. This definition includes a child who is:

- sharing the housing of other persons due to loss of housing, economic hardship or similar reason (sometimes referred to as double-up);
- living in motels, hotels, trailer parks, or camping grounds due to the lack of alternative adequate accommodations;
- living in a car, park, public space, abandoned building, substandard housing, bus or train station, or similar settings;
- abandoned in hospitals;
- a migratory child who qualifies as homeless because he or she is living in circumstances described above;
- An unaccompanied youth is a homeless child for whom no parent or person in parental relation is available (8 NYCRR §100.2[x][1][vi]).

This LEA homeless liaison will ensure that:

- Homeless children and youth are identified by school personnel and through coordination activities with other entities and agencies;
- Homeless students enroll in, and have full and equal opportunity to succeed in, the schools of the LEA;

■ Homeless children and youth and their families receive educational services for which they are eligible, including Head Start, Even Start, and preschool programs administered by the LEA, and referrals to health, mental health, dental, and other appropriate services;

■ Parents or guardians of homeless children and youth are informed of educational and related opportunities available to their children, and are provided with meaningful opportunities to participate in the education of their children;

■ Parents and guardians and unaccompanied youth are fully informed of all transportation services, including transportation to and from the school of origin, and are assisted in accessing transportation services;

■ Enrollment disputes are mediated in accordance with the requirements of McKinney-Vento; and

■ Public notice of the educational rights of homeless students is disseminated to locations where they receive services under McKinney-Vento.

### DISTRICT CENSUS OF CHILDREN WITH DISABILITIES

The Board of Education of every school district must locate and identify all children with disabilities from birth to 21 years of age who reside in the school district. A register of all such children with a disability must be maintained and revised annually by the Committee on Special Education (CSE) and the Committee on Preschool Special Education (CPSE).

Since the general education census is required only every two years, it would be a great help to the District CSE/CPSE if parents and/or guardians would provide the following information on any pre-school age child (birth through four years old) who they suspect may have some type of disability – whether physical, mental, or developmental.

If you suspect your preschool-aged child (birth to four years old) may have a disability, no matter how slight or how severe, please fill out the form below and return it to:

**Warren Scott Rudnicki, Director of Pupil  
Personnel Services and Instruction  
Franklinville Central School  
32 North Main Street  
Franklinville, NY 14737**

### DISTRICT CENSUS OF CHILDREN WITH A SUSPECTED DISABILITY

Child's Name: \_\_\_\_\_

Date of Birth: \_\_\_\_\_

Possible or Suspected Disability: \_\_\_\_\_

Name of Parent/Guardian: \_\_\_\_\_

Address of Parent/Guardian: \_\_\_\_\_

Phone Number: \_\_\_\_\_

Best Time to Contact: \_\_\_\_\_





# Franklinville Central School District Breakfast Menu

September  
2020

"Start your day out RIGHT with an energy boosting breakfast!! We are an "Offer vs Serve" district. Students can build their own breakfast but must consist of 2 portions of meat and/or bread, Fruit and juice or milk (3 total portions) for a balanced meal.



## Breakfast Prices

Elementary-student	\$1.15
High School-student	\$1.45
Milk	\$0.40
Adult (includes tax)	\$2.75

\*\*Ask us about the convenience of myschoolbucks.com to pre-pay on your account using your credit/debit card and track your child's purchases.

For additional information contact:

Jeff Colburn, FSD  
716-676-8017

MENU IS SUBJECT TO CHANGE WITHOUT NOTICE

Free & Reduced Meal applications may be obtained from the Elementary School or Ten Broeck Academy throughout the school year. If you are eligible for free or reduced lunch, you are also eligible for breakfast. Not sure... call us!

MONDAY	TUESDAY	WEDNESDAY	THURSDAY	FRIDAY
	1 NO SCHOOL!! SUPERINTENDENT'S DAY	2 NO SCHOOL!! SUPERINTENDENT'S DAY	3	4
7 NO SCHOOL!! Labor Day	8 Toast/Jelly Fruit Yogurt String Cheese  Assorted Cold Cereal Apple or Orange Juice Fruit Fat Free & 1% milk	9 H.S. E.S. Breakfast Sandwich Egg Patties Fruit Yogurt String Cheese Assorted Cold Cereal Apple or Orange Juice Fruit Fat Free & 1% milk	10 Breakfast Pizza Fruit Yogurt String Cheese  Assorted Cold Cereal Apple or Orange Juice Fruit Fat Free & 1% milk	11 Cinnamon Roll Fruit Yogurt String Cheese  Assorted Cold Cereal Apple or Orange Juice Fruit Fat Free & 1% milk
14 Waffles/Syrup Fruit Yogurt String Cheese  Assorted Cold Cereal Apple or Orange Juice Fruit Fat Free & 1% milk	15 Bagel/Cream Cheese Fruit Yogurt String Cheese  Assorted Cold Cereal Apple or Orange Juice Fruit Fat Free & 1% milk	16 L.A. Cinna Bread Fruit Yogurt String Cheese  Assorted Cold Cereal Apple or Orange Juice Fruit Fat Free & 1% milk	17 Breakfast Pizza Fruit Yogurt String Cheese  Assorted Cold Cereal Apple or Orange Juice Fruit Fat Free & 1% milk	18 Fruit Bar Fruit Yogurt String Cheese  Assorted Cold Cereal Apple or Orange Juice Fruit Fat Free & 1% milk
21 Pancakes/Syrup Fruit Yogurt String Cheese  Assorted Cold Cereal Apple or Orange Juice Fruit Fat Free & 1% milk	22 English Muffin/Jelly Fruit Yogurt String Cheese  Assorted Cold Cereal Apple or Orange Juice Fruit Fat Free & 1% milk	23 H.S. E.S. Breakfast Sandwich Muffin Fruit Yogurt String Cheese Assorted Cold Cereal Apple or Orange Juice Fruit Fat Free & 1% milk	24 Breakfast Pizza Fruit Yogurt String Cheese  Assorted Cold Cereal Apple or Orange Juice Fruit Fat Free & 1% milk	25 Cheese Omelet Fruit Yogurt String Cheese  Assorted Cold Cereal Apple or Orange Juice Fruit Fat Free & 1% milk
28 French Toast/Syrup Fruit Yogurt String Cheese  Assorted Cold Cereal Apple or Orange Juice Fruit Fat Free & 1% milk	29 Toast/Jelly Fruit Yogurt String Cheese  Assorted Cold Cereal Apple or Orange Juice Fruit Fat Free & 1% milk	30 H.S. E.S. Cheese Omelet Sausage Sandwich Fruit Yogurt String Cheese Assorted Cold Cereal Apple or Orange Juice Fruit Fat Free & 1% milk		

■ "This institution is an equal opportunity provider and employer."

# Franklinville Central School District Lunch Menu

September  
2020

[www.tbafcs.org](http://www.tbafcs.org)

We are an "Offer vs. Serve" district. There are 5 components to every School Lunch: Milk, Protein, Fruit, Vegetable, & Grain. All Lunches include: 3-5 components including Fruit or Vegetables. Meals with only 3 components, without a fruit or vegetable must be priced as a la carte items.



## Lunch Prices

Elementary School-student	\$2.10
High School-student	\$2.30
Milk	\$0.40
Adult (includes tax)	\$4.20

\*\*Ask us about the convenience of myschoolbucks.com to pre-pay on your account using your credit/debit card and track your child's purchases.



Skim, 1%, and Fat free flavored milk is offered at lunch.

\*\* PB & J  
Available Daily

For additional information contact:

Jeff Colburn, FSD  
716-676-8017

MENU IS SUBJECT TO CHANGE WITHOUT NOTICE

Free & Reduced Meal applications may be obtained from the Elementary School or Ten Broeck Academy throughout the school year. If you are eligible for free or reduced lunch, you are also eligible for breakfast. Not sure... call us!

MONDAY	TUESDAY	WEDNESDAY	THURSDAY	FRIDAY
	1 NO SCHOOL!! SUPERINTENDENT'S DAY	2 NO SCHOOL!! SUPERINTENDENT'S DAY	3	4
7 NO SCHOOL!! Labor Day	8 Welcome back!!! Entrée: Chicken Nuggets SAND: ES: Ham w/cheese SOUP: Cheddar Broccoli  Soft Pretzel Carrots Variety Fruit	9 Entrée: Pepperoni Pizza Boats SAND: ES: Tuna SOUP: Chicken Noodle Soup  Corn Variety Fruit	10 Entrée: Hard Shell Tacos w/lettuce, tomato, cheese SAND: ES: Turkey w/cheese SOUP: N.E. Clam Chowder  Baked Beans Variety Fruit	11 H.S. Entrée: Chicken Wing Pizza Krunchy Fish Nuggets SAND: Variety Sandwiches SOUP: Chili  E.S. Mashed Potatoes Green Beans Variety Fruit
14 Entrée: Hot Dog/Bun SAND: ES: Bologna w/cheese SOUP: Stuffed Pepper  French Fries Carrots Variety Fruit	15 Entrée: Chicken Tenders SAND: ES: Ham w/cheese SOUP: Cream of Potato  Soft Pretzel Green Beans Variety Fruit	16 Entrée: Stuffed Crust Pizza SAND: ES: Tuna SOUP: Cheddar Broccoli  Tossed Fresh Garden Salad Variety Fruit	17 Entrée: Meatball Sub SAND: ES: Turkey w/cheese SOUP: Chicken Noodle Soup  Broccoli Variety Fruit	18 Entrée: Chicken Quesadilla SAND: Variety Sandwiches SOUP: N.E. Clam Chowder  Baked Beans Variety Fruit
21 Entrée: Mac and Cheese/Roll SAND: ES: Bologna w/cheese SOUP: Chili  Stewed Tomatoes/Carrots Variety Fruit	22 Entrée: Chicken Patty/Bun SAND: ES: Ham w/cheese SOUP: Stuffed Pepper  Soft Pretzel Green Beans Variety Fruit	23 Entrée: Homemade Pizza SAND: ES: Tuna SOUP: Cream of Potato  Corn Variety Fruit	24 Entrée: Taco in a bag w/lettuce, tomato, cheese SAND: ES: Turkey w/cheese SOUP: Cheddar Broccoli  Baked Beans Variety Fruit	25 Entrée: Toasted Cheese SAND: Variety Sandwiches SOUP: Tomato  Broccoli Variety Fruit
28 Entrée: Cheese Burger/Bun SAND: ES: Bologna w/cheese SOUP: Chicken Noodle Soup  French Fries Carrots Variety Fruit	29 Entrée: Chinese/Popcorn Chicken SAND: ES: Ham w/cheese SOUP: N.E. Clam Chowder  Rice Stir fry veggies Variety Fruit	30 Entrée: Personal Pizza SAND: ES: Tuna SOUP: Chili  Green Beans Variety Fruit		



■ "This institution is an equal opportunity provider and employer."



# Franklinville Central School District Breakfast Menu

October  
2020

"Start your day out **RIGHT** with an energy boosting breakfast!! We are an "Offer vs Serve" district. Students can build their own breakfast but must consist of 2 portions of meat and/or bread, fruit and juice or milk (3 total portions) for a balanced meal.



## Breakfast Prices

Elementary-student	\$1.15
High School-student	\$1.45
Milk	\$0.40
Adult (includes tax)	\$2.75

\*\*Ask us about the convenience of myschoolbucks.com to pre-pay on your account using your credit/debit card and track your child's purchases.

For additional information contact:

Jeff Colburn, FSD  
716-676-8017

MENU IS SUBJECT TO CHANGE WITHOUT NOTICE

Free & Reduced Meal applications may be obtained from the Elementary School or Ten Broeck Academy throughout the school year. If you are eligible for free or reduced lunch, you are also eligible for breakfast. Not sure... call us!

MONDAY	TUESDAY	WEDNESDAY	THURSDAY	FRIDAY
 <b>October</b>			<b>1</b> <b>Breakfast Pizza</b> Fruit Yogurt String Cheese Assorted Cold Cereal Apple or Orange Juice Fruit Fat Free & 1% milk	<b>2</b> <i>Grandparent's Day</i> <b>Cinnamon Roll</b> Fruit Yogurt String Cheese Assorted Cold Cereal Apple or Orange Juice Fruit Fat Free & 1% milk
<b>5</b> <b>Waffles/Syrup</b> Fruit Yogurt String Cheese Apple or Orange Juice Fruit Fat Free & 1% milk	<b>6</b> <b>Bagel/cream cheese</b> Fruit Yogurt String Cheese Assorted Cold Cereal Apple or Orange Juice Fruit Fat Free & 1% milk	<b>7</b> H.S. E.S. <b>Breakfast Sandwich</b> <b>Egg Patties</b> Fruit Yogurt String Cheese Assorted Cold Cereal Apple or Orange Juice Fruit Fat Free & 1% milk	<b>8</b> <b>Breakfast Pizza</b> Fruit Yogurt String Cheese Assorted Cold Cereal Apple or Orange Juice Fruit Fat Free & 1% milk	<b>9</b> <b>Fruit Bar</b> Fruit Yogurt String Cheese Assorted Cold Cereal Apple or Orange Juice Fruit Fat Free & 1% milk
<b>12</b> NO SCHOOL COLUMBUS DAY	<b>13</b> <b>Toast/Jelly</b> Fruit Yogurt String Cheese Assorted Cold Cereal Apple or Orange Juice Fruit Fat Free & 1% milk	<b>14</b> <b>L.A. Cinna Bread</b> Fruit Yogurt String Cheese Assorted Cold Cereal Apple or Orange Juice Fruit Fat Free & 1% milk	<b>15</b> <b>Breakfast Pizza</b> Fruit Yogurt String Cheese Assorted Cold Cereal Apple or Orange Juice Fruit Fat Free & 1% milk	<b>16</b> <b>Cheese Omelet</b> Fruit Yogurt String Cheese Assorted Cold Cereal Apple or Orange Juice Fruit Fat Free & 1% milk
<b>19</b> <b>Pancakes/Syrup</b> Fruit Yogurt String Cheese Assorted Cold Cereal Apple or Orange Juice Fruit Fat Free & 1% milk	<b>20</b> <b>English Muffin/Jelly</b> Fruit Yogurt String Cheese Assorted Cold Cereal Apple or Orange Juice Fruit Fat Free & 1% milk	<b>21</b> H.S. E.S. <b>Breakfast Sandwich</b> <b>Muffin</b> Fruit Yogurt String Cheese Assorted Cold Cereal Apple or Orange Juice Fruit Fat Free & 1% milk	<b>22</b> <b>Breakfast Pizza</b> Fruit Yogurt String Cheese Assorted Cold Cereal Apple or Orange Juice Fruit Fat Free & 1% milk	<b>23</b> <b>NO SCHOOL!!</b> <b>SUPERINTENDENT'S DAY</b>
<b>26</b> <b>French Toast/Syrup</b> Fruit Yogurt String Cheese Assorted Cold Cereal Apple or Orange Juice Fruit Fat Free & 1% milk	<b>27</b> <b>Bagel/cream cheese</b> Fruit Yogurt String Cheese Assorted Cold Cereal Apple or Orange Juice Fruit Fat Free & 1% milk	<b>28</b> H.S. E.S. <b>Cheese Omelet</b> <b>Sausage Sandwich</b> Fruit Yogurt String Cheese Assorted Cold Cereal Apple or Orange Juice Fruit Fat Free & 1% milk	<b>29</b> <b>Breakfast Pizza</b> Fruit Yogurt String Cheese Assorted Cold Cereal Apple or Orange Juice Fruit Fat Free & 1% milk	<b>30</b> <b>Cinnamon Roll</b> Fruit Yogurt String Cheese Assorted Cold Cereal Apple or Orange Juice Fruit Fat Free & 1% milk

■ "This institution is an equal opportunity provider and employer."

[www.tbafca.org](http://www.tbafca.org)

We are an "Offer vs. Serve" district. There are 5 components to every School Lunch. Milk, Protein, Fruit, Vegetable, & Grain. All Lunches include: 3-5 components including Fruit or Vegetables. Meals with only 3 components, without a fruit or vegetable must be priced as a la carte items.



Lunch Prices	
Elementary School-student	\$2.10
High School-student	\$2.30
Milk	\$0.40
Adult (includes tax)	\$4.20

\*\*Ask us about the convenience of myschoolbucks.com to pre-pay on your account using your credit/debit card and track your child's purchases.



Skim, 1%, and Fat free flavored milk is offered at lunch.

\*\* P B & J  
Available Daily

For additional information contact:  
Jeff Colburn, FSD  
716-676-8017

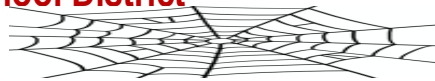
MENU IS SUBJECT TO CHANGE WITHOUT NOTICE

Free & Reduced Meal applications may be obtained from the Elementary School or Ten Broeck Academy throughout the school year. If you are eligible for free or reduced lunch, you are also eligible for breakfast. Not sure... call us!



# Franklinville Central School District Lunch Menu

October  
2020



MONDAY	TUESDAY	WEDNESDAY	THURSDAY	FRIDAY
 <b>5</b> <b>Entrée:</b> Hot Dog/bun <b>SAND:</b> ES: Bologna w/cheese <b>SOUP:</b> Cheddar Broccoli <b>French Fries</b> <b>Variety Fruit</b>	<b>6</b> <b>Entrée:</b> Chicken Nuggets <b>SAND:</b> ES: Ham w/cheese <b>SOUP:</b> Chicken Noodle <b>Soft Pretzel</b> <b>Green Beans</b> <b>Variety Fruit</b>	<b>7</b> <b>Entrée:</b> Pepperoni Pizza Boats <b>SAND:</b> ES: Tuna <b>SOUP:</b> N.E. Clam Chowder <b>Corn</b> <b>Variety Fruit</b>	<b>8</b> <b>Entrée:</b> Taco in a bag w/lettuce,tomato,cheese <b>SAND:</b> ES:Turkey w/cheese <b>SOUP:</b> Chili <b>Baked Beans</b> <b>Variety Fruit</b>	<b>9</b> <b>Entrée:</b> Chicken Fajitas lettuce,tomato,cheese <b>SAND:</b> Variety Sandwiches <b>SOUP:</b> Cream of Potato <b>Baked Beans</b> <b>Variety Fruit</b>
<b>12</b> NO SCHOOL!! COLUMBUS DAY	<b>13</b> <b>Entrée:</b> Chicken Tenders <b>SAND:</b> ES: Ham w/cheese <b>SOUP:</b> Stuffed Pepper <b>Soft Pretzel</b> <b>Green Beans</b> <b>Variety Fruit</b>	<b>14</b> <b>Entrée:</b> Stuffed Crust Pizza <b>SAND:</b> ES: Tuna <b>SOUP:</b> Cream of Potato <b>Corn</b> <b>Variety Fruit</b>	<b>15</b> <b>Entrée:</b> Breaded Pork Patty/Bun <b>SAND:</b> ES:Turkey w/cheese <b>SOUP:</b> Cheddar Broccoli <b>Broccoli</b> <b>Variety Fruit</b>	<b>16</b> <b>Entrée:</b> Breakfast Sandwich <b>SAND:</b> French Toast/Sausage <b>SOUP:</b> Variety Sandwiches <b>Chicken Noodle</b> <b>Carrots</b> <b>Variety Fruit</b>
<b>19</b> <b>Entrée:</b> Mac and Cheese/Roll <b>SAND:</b> ES: Bologna w/cheese <b>SOUP:</b> N.E. Clam Chowder <b>Stewed Tomatoes/Carrots</b> <b>Variety Fruit</b>	<b>20</b> <b>Entrée:</b> Chicken Patty/Bun <b>SAND:</b> ES: Ham w/cheese <b>SOUP:</b> Chili <b>Broccoli</b> <b>Variety Fruit</b>	<b>21</b> <b>Entrée:</b> Homemade C+P Pizza <b>SAND:</b> ES: Tuna <b>SOUP:</b> Stuffed Pepper <b>Green Beans</b> <b>Variety Fruit</b>	<b>22</b> <b>Entrée:</b> Soft Shell Taco w/lettuce,tomato,cheese <b>SAND:</b> ES:Turkey w/cheese <b>SOUP:</b> Cream of Potato <b>Baked Beans</b> <b>Variety Fruit</b>	<b>23</b> <b>NO SCHOOL!!</b> <b>SUPERINTENDENT'S DAY</b>
<b>26</b> <b>Entrée:</b> Hot Dog/bun <b>SAND:</b> ES: Bologna w/cheese <b>SOUP:</b> Cheddar Broccoli <b>Mashed Potatoes</b> <b>Corn</b> <b>Variety Fruit</b>	<b>27</b> <b>Entrée:</b> Chicken Nuggets <b>SAND:</b> ES: Ham w/cheese <b>SOUP:</b> Chicken Noodle <b>Soft Pretzel</b> <b>Carrots</b> <b>Variety Fruit</b>	<b>28</b> <b>Entrée:</b> Personal Pizza <b>SAND:</b> ES: Tuna <b>SOUP:</b> N.E. Clam Chowder <b>Tossed Fresh Garden Salad</b> <b>Variety Fruit</b>	<b>29</b> <b>Entrée:</b> Meatball Sub <b>SAND:</b> ES:Turkey w/cheese <b>SOUP:</b> Chili <b>Broccoli</b> <b>Variety Fruit</b>	<b>30</b> <b>Entrée:</b> Bat Burger/Bun <b>SAND:</b> Variety Sandwiches <b>SOUP:</b> Stuffed Pepper <b>Petrified Potatoes</b> <b>BOO Beans</b> <b>Fang-tastic Fruit</b>

■ "This institution is an equal opportunity provider and employer."

## FRANKLINVILLE HIGH SCHOOL/FRANKLINVILLE ELEMENTARY SCHOOL

31 North Main Street / 32 North Main Street  
Franklinville, NY 14737

Non-Profit Org.  
**U.S. POSTAGE PAID**  
Permit No. 1825  
Olean, NY 14760  
ECRWSS

### ADMINISTRATION:

Christopher Swiatek, Superintendent  
W. Scott Rudnicki, Director of Pupil Personnel Services and Instruction  
Robert Hirsch, Middle/High Principal  
Thomas Riddoch, Elementary Principal  
Francesca Keeling, Executive Assistant/Board Clerk

### BOARD OF EDUCATION:

Sue Ciesla, President  
Diane Soulvie, Vice-President  
Sara Hatch  
Mark Slavinski  
William Weigel

**or Current Resident**

**POSTAL CUSTOMER**

## CAFETERIA SERVICES INFORMATION

By Jeffrey Colburn, Cafeteria Manager • Phone: (716)676-8017 • Email: jcolburn@tbafcs.org

As an approved Community Eligibility Provision (CEP) school, **ALL students will continue to receive a free breakfast and free lunch.** Although applications are not required for this program, we encourage families to file an application that may be used for eligibility for other reduced cost services to students. Applications for Free/Reduced meals may be found on our website: [www.tbafcs.org](http://www.tbafcs.org), at the main offices and in this FOCUS newsletter on page 13.

### Meal prices are as follows:

K-5 Breakfast.....	\$1.15	6-12 Breakfast .....	\$1.45
K-5 Lunch .....	\$2.10	6-12 Lunch.....	\$2.30
Adult Brkfst .....	\$2.75	Adult Lunch.....	\$4.20



### Box Tops for Education

The District will also, once again, collect "Box Tops for Education." Please bring in box tops from General Mills products.

NO MORE CLIPPING.



SCAN YOUR RECEIPT.

Download on the  
App Store

GET IT ON  
Google Play

### HEAD START FULL DAY PROGRAM

Franklinville Head Start has openings for children who will be 3 by **September 1st**. Applicants should have a current physical, up to date shot record and should be potty trained. Income guidelines apply, please call **Aimee Stanbro at 716-474-1807** for more information or stop by the Elementary School for an application.



### FOLLOW US ON TWITTER

@tbafcs and @Franklinville2 and Instagram: **Franklinville\_Elementary**

Please use the hashtag **#proudTBAPanther** when highlighting the awesome things happening in our community.